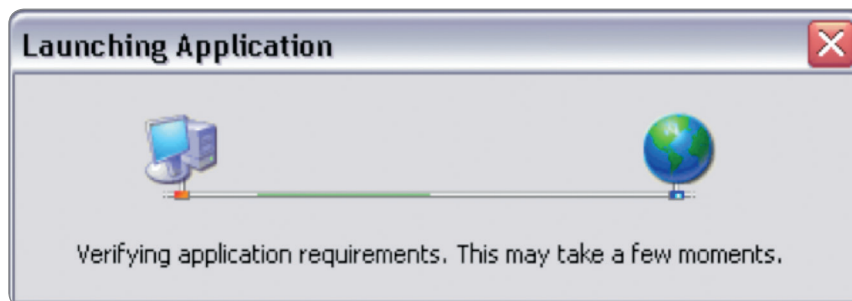


Thomson Reuters REDI Installation Guide

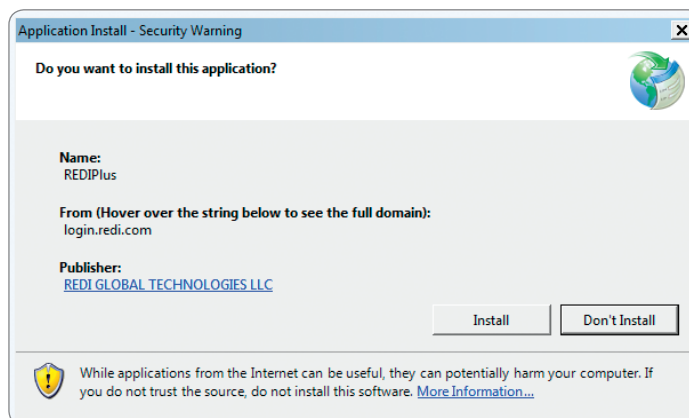
1.

Using Internet Explorer® (IE), go to <http://login.redi.com>.



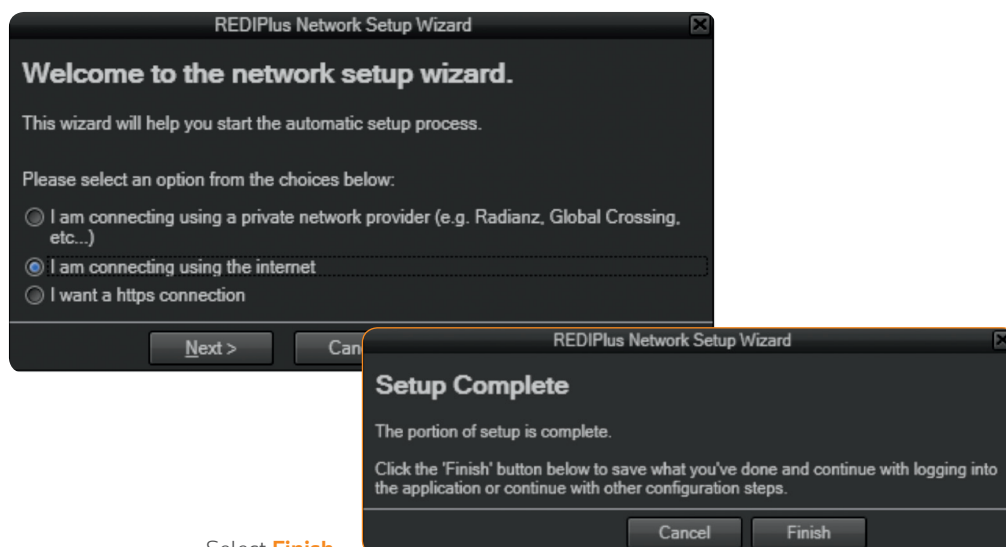
2.

Click **Install**.



3.

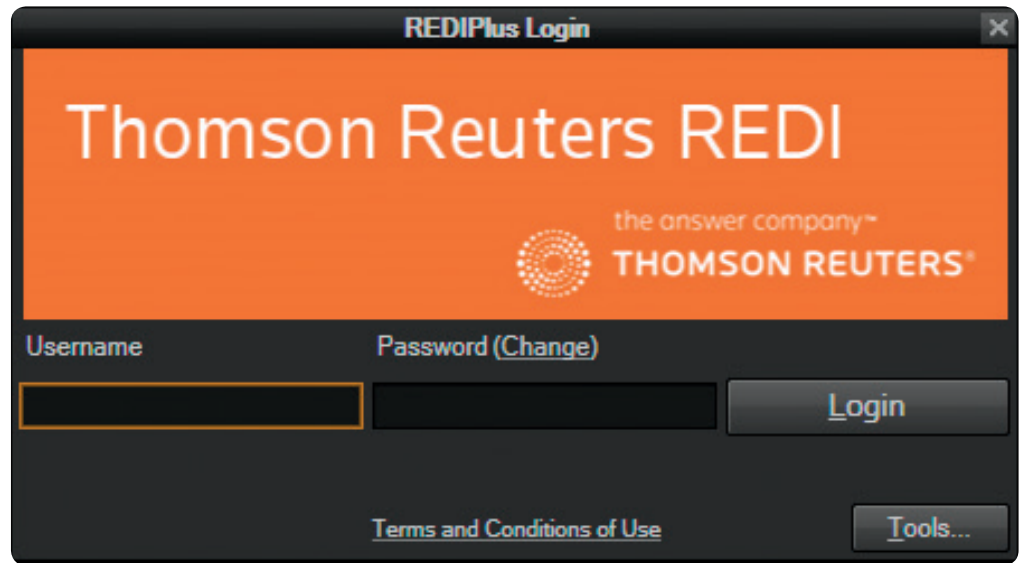
When prompted for your network preference, select **Internet** then **Next**. (Note: for information about a private network setup, please contact your Thomson Reuters REDI® representative.)



Select **Finish**.

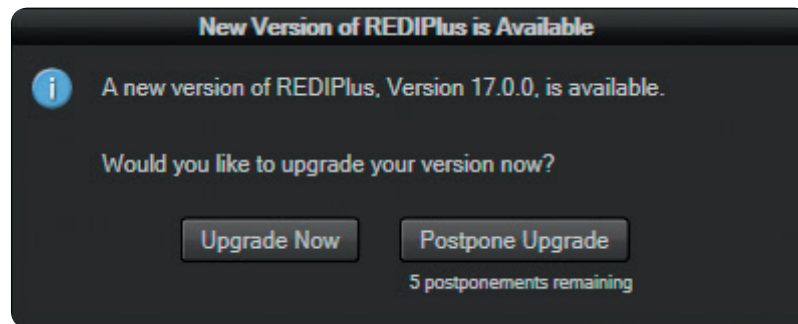
4.

At the log-in screen, please log in with your REDI ID and password (provided by your REDI representative).



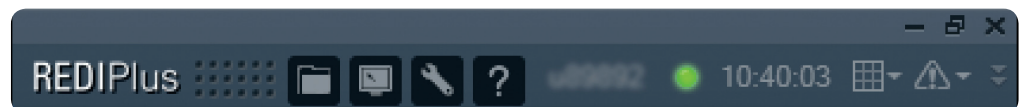
5.

At first log-in, you will be prompted to install your assigned REDI version.



6.

You should now be logged in to REDI.



REDI® is a registered trademark in the United States and other countries throughout the world. Approved for distribution in the United States by REDI Global Technologies LLC, member FINRA, and in the United Kingdom by REDI Technologies Ltd (FCA # 612490). This communication is marketing material and is not intended to be a recommendation, solicitation or offer to buy or sell any financial instrument. Options involve risk and are not suitable for all investors. For more information on the risk of trading options, please refer to the Option Clearing Corporation's "Characteristics and Risks of Standardized Options."

Visit financial.tr.com/redi

The intelligence, technology
and human expertise you need
to find trusted answers.

