



Thomson Reuters ESG data and solutions

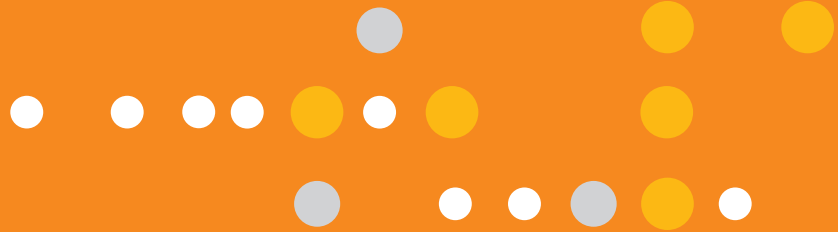
Research with confidence

Issues such as climate change, diversity, human rights, “license to operate,” business ethics and corporate governance are at the forefront of public and political attention. Investors are increasingly demanding that these issues are factored into their portfolios, and fund managers are differentiating their services using environmental, social and governance (ESG) criteria.

Why Thomson Reuters for your ESG research and analysis?

With Thomson Reuters Eikon®, you can easily integrate ESG factors into portfolio analysis, equity research, screening or quantitative analysis, so you can more effectively meet investment mandates and identify risks across your portfolios. Access all the data and tools you need in one place including:

- Transparent ESG data and scores for over 6,000 public companies with data since FY2002, longer than other providers
- Customized Analytics, Scores and Ranks to meet specific ESG requirements
- 400+ ESG data points and 70+ ESG analytics – all standardized so you can easily benchmark companies
- Screening tools to help you efficiently mitigate risk and find alpha
- Portfolio analytics and risk-monitoring tools
- Idea-generation tools to screen for ESG mandates and drill down into company-specific metrics
- Real-time ESG signals from 75,000 sources, for portfolio construction and company monitoring in partnership with TruValue Labs
- Carbon Data and Estimate models that are both patented and fully transparent – providing a CO2 estimated value when a reported value is not available
- Carbon footprint monitoring and reporting to meet regulatory requirements
- Green bonds
- Indices including ESG, Diversity and Inclusion, Fossil Free and more!



Risk Assessment and Mitigation

We provide simple tools so you can efficiently carry out negative screening to identify companies involved in activities such as alcohol, tobacco and armaments. Simply select the customizable criteria and quickly narrow down your list of companies to offer insight into risk exposure faster than ever before. On the same Thomson Reuters Eikon platform, you can perform portfolio optimization against ESG metrics.

Monitor Your Coverage Universe

With Eikon you can quickly spot trends and make comparisons within your portfolio of companies. Load your coverage universe and easily configure the ESG criteria so you can see aggregated ESG measures per sector or region on any metric, on the fly.

Generate Investment Ideas

With Eikon you can combine ESG metrics with other factors such as Thomson Reuters StarMine® quant model scores to identify investment opportunities. Screen your coverage universe by easily aligning your ESG mandates with the associated filters. Dive into the detail for any number of the 6,000+ companies with our transparent ESG views. With a click of a button, compare companies side by side against key metrics.

Real-Time and Materiality Component

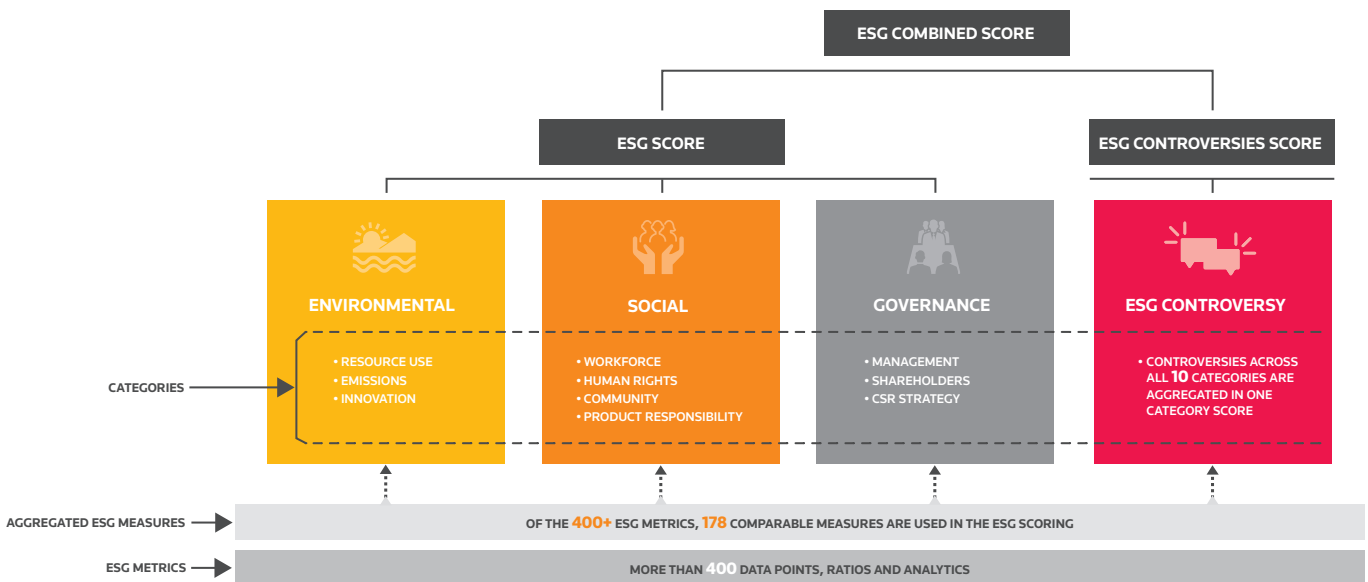
Thomson Reuters and TruValue Labs bring to you Insight360 SASB Edition, an ESG data platform that is comparable, timely and financially material. Leverage the Sustainability Accounting Standards Board (SASB)'s ESG Materiality Framework to find opportunities and manage risks. The Insight 360 app is integrated into Eikon and combines the power of TruValue Labs' timely ESG insights with Thomson Reuters robust set of ESG data, all filtered by the SASB materiality standards. Find opportunities, manage risks and build portfolios to meet any ESG strategy.

Meet Regulatory or Voluntary Reporting Requirements

Leverage Eikon's capabilities to meet voluntary commitments or regulatory reporting requirements. Using Eikon's Portfolio Analytics tool, you can measure and report on aggregated ESG scores or the carbon footprint of your portfolio.

Access the data

Thomson Reuters ESG data is available through Eikon, feeds and Thomson Reuters QA Direct.



Visit financial.tr.com/esg

The intelligence, technology and human expertise you need to find trusted answers.



the answer company™
THOMSON REUTERS®